

Central Iowa COVID19 Update

Wednesday, March 2, 2022



Statistical Consulting

Dr. Meg Schaeffer





Quick Stats¹

	Polk County	Next Target ^{**}	Iowa
Percent of population with at least 1 dose*	73.6%		67.3%
Percent of population with fully vaccinated*	66.8%	85%	61.1%
Average daily cases the last 7d	55		358
CDC County Transmission Level ^{***}	Low	Low	
Total cases per 100,000 the last 7d ^{**}	78	<100	79
Percent of staffed inpatient beds occupied by COVID-19 patients (7-day average) ^{**}	5.3%	<10-14%	38.01%
New COVID-19 admissions per 100,000 population (7-day total) ^{**}	9.6	<10	38

*[Vaccine Information](#) | [Iowa COVID-19 Information](#)
 All data are sourced from <https://coronavirus.iowa.gov/pages/case-counts> with previous days refreshed weekly. The population of Polk County used is 490,161. Population of Iowa used is 3.155 million. Averages and percent positivity are subject to change with retrospectively refreshed data.
^{**}[CDC COVID Data Tracker](#)
^{***}[COVID-19 County Check Tool](#) | CDC

Critical Points, Media, and Research

CDC adjusted community transmission metrics this week to center on cases per population, percent bed occupancy, and new hospital admissions. The source of these metrics for Iowa are from the Iowa Department of Public Health website and CDC’s data tracker. An overview of the new community transmission levels is located here - [COVID-19 Community Levels](#) | CDC.

Polk County has declined to “low” transmission levels. New daily cases are averaging slightly over 50 and >350 for the state. Hospitalizations have increased the last few days along with deaths.

News & Research

- [Safety Monitoring of COVID-19 Vaccine Booster Doses Among Persons Aged 12–17 Years — United States, December 9, 2021–February 20, 2022](#). Link [here](#).
- [Effectiveness of COVID-19 Pfizer-BioNTech BNT162b2 mRNA Vaccination in Preventing COVID-19–Associated Emergency Department and Urgent Care Encounters and Hospitalizations Among Nonimmunocompromised Children and Adolescents Aged 5–17 Years — VISION Network, 10 States, April 2021–January 2022](#). Link [here](#).
- [SARS-CoV-2 B.1.1.529 \(Omicron\) Variant Transmission Within Households — Four U.S. Jurisdictions, November 2021–February 2022](#). Link [here](#).
- [Antigen Test Positivity After COVID-19 Isolation — Yukon-Kuskokwim Delta Region, Alaska, January–February 2022](#). Link [here](#).
- [Results from a Test-to-Release from Isolation Strategy Among Fully Vaccinated National Football League Players and Staff Members with COVID-19 — United States, December 14–19, 2021](#). Link [here](#).
- [Covid-19 Vaccine Effectiveness against the Omicron \(B.1.1.529\) Variant](#) | NEJM
- [Association between two mass-gathering outdoor events and incidence of SARS-CoV-2 infections during the fifth wave of COVID-19 in north-east Spain: A population-based control-matched analysis](#) - The Lancet Regional Health – Europe
- [White House unveils plan to move America to a new stage of the Covid pandemic](#)
- [IDPH: COVID-19 cases continue to drop in Iowa](#)
- [Notes from the Field: Outbreak of COVID-19 Among a Highly Vaccinated Population Aboard a U.S. Navy Ship After a Port Visit — Reykjavik, Iceland, July 2021](#). Link [here](#).



Vaccine Progress

Polk Co Vaccination Rates CDC Covid Data Tracker Data (*)	At Least One Dose	Difference prev week	Fully Vaccinated	Difference prev week
Total	360,890	651	327,596	920
% of Total Population	73.6%	0.1%	66.8%	0.2%
Population ≥ 5 Years of Age	360,850	650	327,596	920
% of Population ≥ 5 Years of Age	79.2%	0.2%	71.9%	0.2%
Population ≥ 12 Years of Age	343,898	459	312,802	591
% of Population ≥ 12 Years of Age	84.1%	0.1%	76.5%	0.1%
Population ≥ 18 Years of Age	315,962	371	287,527	483
% of Population ≥ 18 Years of Age	85.6%	0.1%	77.9%	0.1%
Population ≥ 65 Years of Age	68,423	28	63,485	28
% of Population ≥ 65 Years of Age	95.0%	0.0%	95.0%	0.0%

(*) CDC COVID Data Tracker Data: CDC data includes vaccine administration data from all sources, including IRIS*, other state immunization registries, and federal entities (Bureau of Prisons, Veterans Health Administration, Department of Defense, and Federal Long-Term Care program). These doses may not have been reported to IRIS.

Link to Zip Code-Level Vaccination Rates - <https://arcg.is/1nTry4>

Polk Co People Fully Vaccinated with a Booster (*)

	Data	Difference prev week
Total	169,789	1,332
% of Fully Vaccinated Population with a Booster Dose	51.8%	0.2%
Fully Vaccinated Population ≥ 18 Years of Age with a Booster Dose	169,760	1,332
% of Fully Vaccinated Population ≥ 18 Years of Age with a Booster Dose	54.3%	0.4%
Fully Vaccinated Population ≥ 50 Years of Age with a Booster Dose	163,834	1,139
% of Fully Vaccinated Population ≥ 50 Years of Age with a Booster Dose	57.0%	0.3%
Fully Vaccinated Population ≥ 65 Years of Age with a Booster Dose	50,688	171
% of Fully Vaccinated Population ≥ 65 Years of Age with a Booster Dose	79.8%	0.2%

(*)The count of people who received a booster dose includes anyone who is fully vaccinated and has received another dose of COVID-19 vaccine since August 13, 2021. This includes people who received booster doses and people who received additional doses.

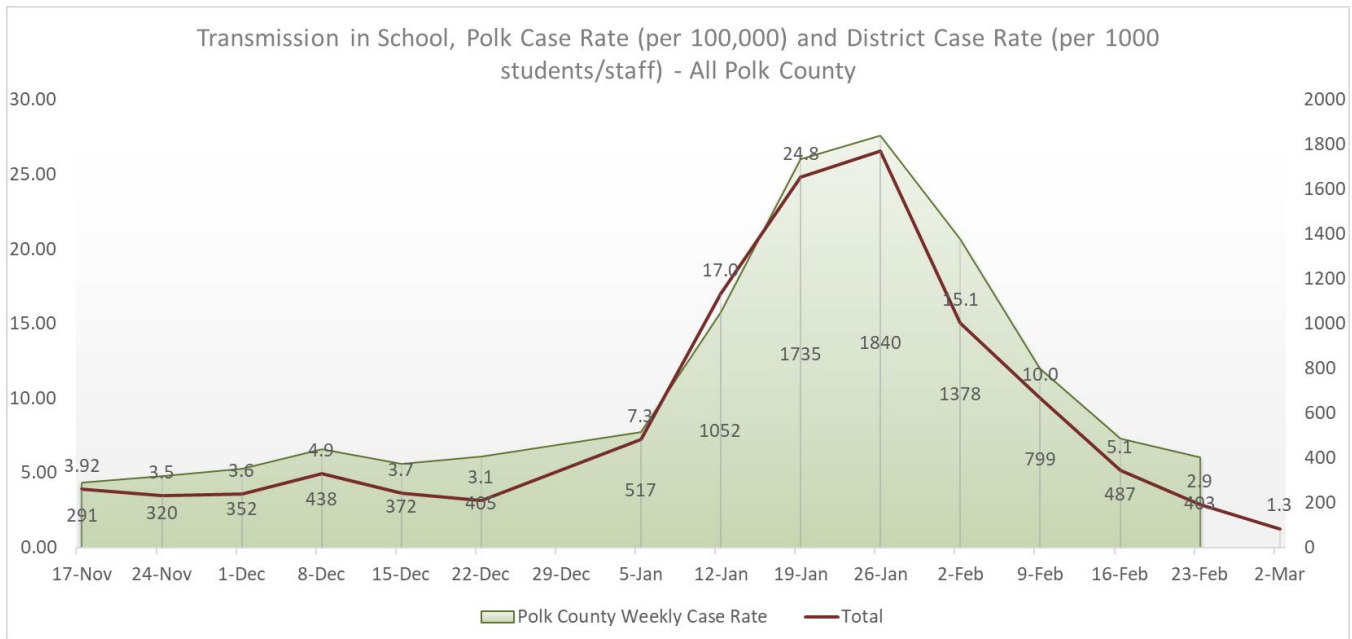
Central Iowa COVID19 Update



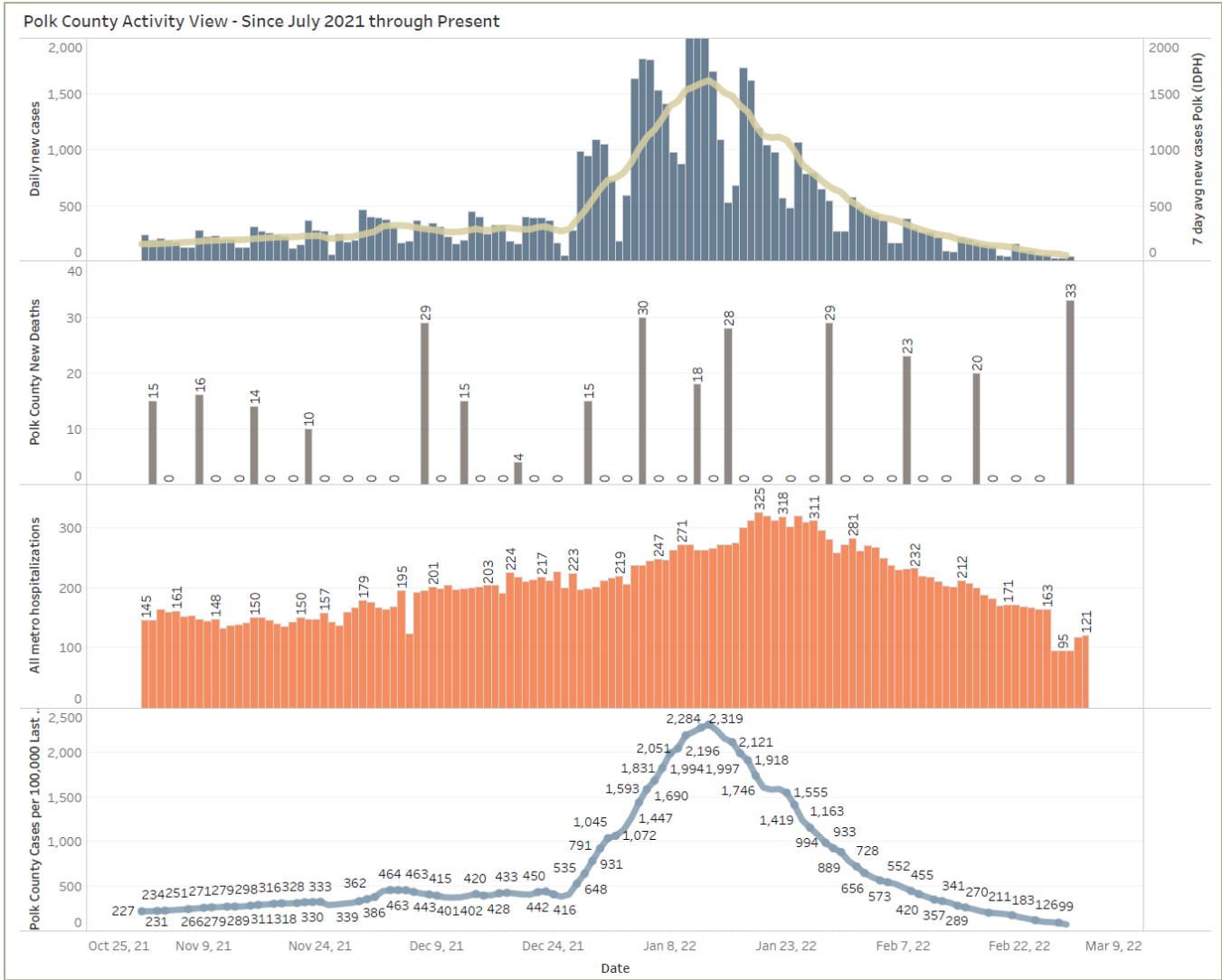
School Data

		New Student/Staff Case Rates per 1000													
Week Ending	17-Nov	24-Nov	1-Dec	8-Dec	15-Dec	22-Dec	5-Jan	12-Jan	19-Jan	26-Jan	2-Feb	9-Feb	16-Feb	23-Feb	2-Mar
DMPs*	2.12	2.24	3.58	5.06	3.79	3.03	7.91	14.79	11.45	19.45	8.45	10.06	2.70	1.61	0.27
Ankeny	4.00	3.33	3.25	5.83	5.00	4.67	NA	18.42	32.08	40.58	24.83	18.33	6.42	3.42	1.92
Waukee	6.70	8.09	4.43	4.52	3.57	3.04	8.26	15.74	13.22	13.04	6.96	3.22	1.74	0.78	0.09
WDM	5.67	5.00	5.00	7.67	5.11	3.78	NA	19.67	31.67	33.44	26.11	11.56	9.11	3.33	3.33
Johnston	3.43	0.86	2.00	3.43	2.86	3.43	NA	8.29	24.57	36.29	8.71	10.29	2.14	2.86	1.71
SE Polk	2.29	3.14	4.14	5.29	2.86	1.71	1.86	13.29	14.71	11.57	10.29	4.86	2.14	1.00	0.29
Urbandale	3.25	4.25	3.00	3.75	1.75	2.75	11.00	29.00	46.00	31.50	20.00	12.00	11.75	7.00	1.25
Total	3.92	3.5	3.6	4.9	3.7	3.1	7.3	17.0	24.8	26.6	15.1	10.0	5.1	2.9	1.3

		New Student/Staff Cases													
Week Ending	17-Nov	24-Nov	1-Dec	8-Dec	15-Dec	22-Dec	5-Jan	12-Jan	19-Jan	26-Jan	2-Feb	9-Feb	16-Feb	23-Feb	23-Feb
DMPs*	70	74	118	167	125	100	261	488	378	642	279	332	89	53	9
Ankeny	48	40	39	70	60	56	NA	221	385	487	298	220	77	41	23
Waukee	90	105	63	65	48	36	120	210	186	150	80	37	20	9	1
WDM	51	45	45	69	46	34	NA	177	285	301	235	104	82	30	30
Johnston	24	6	14	24	20	24	NA	72	208	254	61	72	15	20	12
SE Polk	16	22	29	37	20	12	13	93	103	81	72	34	15	7	2
Urbandale	13	17	12	15	7	11	44	116	184	126	80	48	47	28	5
Total	312	309	320	447	326	273	438	1377	1729	2041	1105	847	345	188	82
Polk Weekly Cases	1428	1566	1727	2144	1825	1983	2532	5156	8502	9015	6752	3913	2385	1973	
Polk County Weekly Case Rate	291	320	352	438	372	405	517	1052	1735	1840	1378	799	487	403	



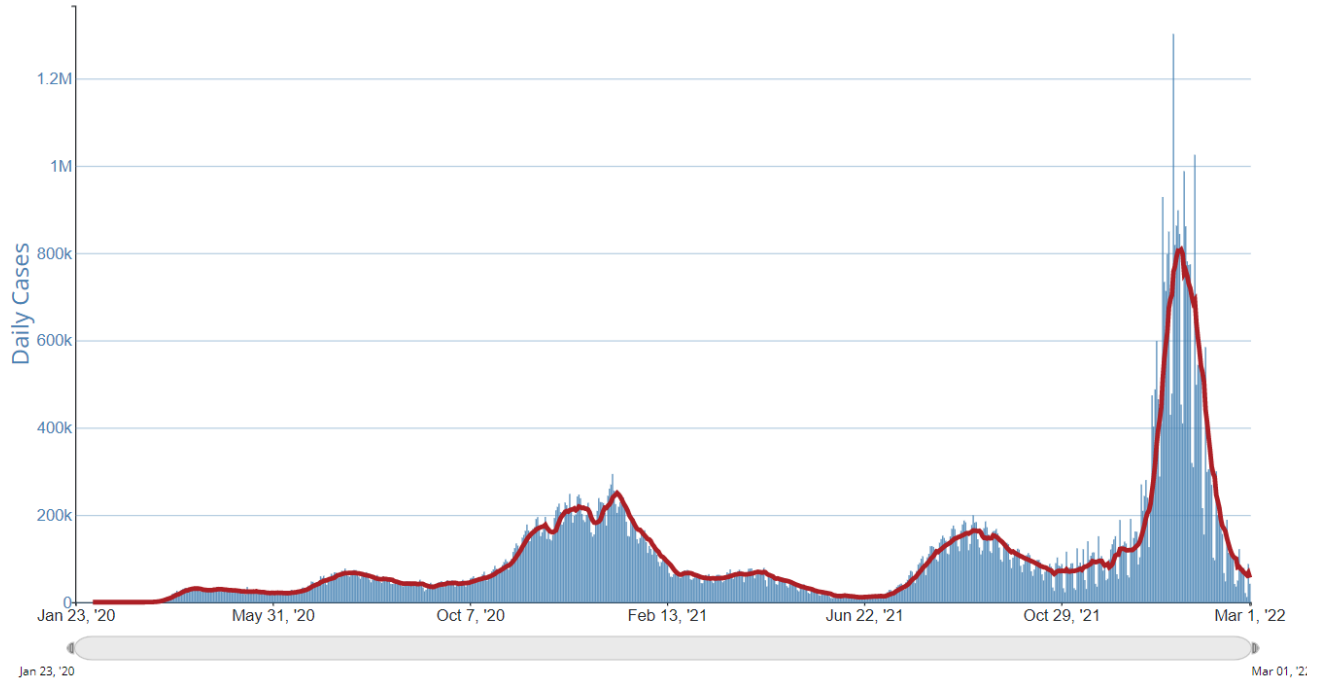
Central Iowa COVID19 Update



Central Iowa COVID19 Update



Daily Trends in Number of COVID-19 Cases in The United States Reported to CDC



	CASES DAILY AVG.	PER 100,000	14-DAY CHANGE	HOSPITALIZED DAILY AVG.	PER 100,000	14-DAY CHANGE	DEATHS DAILY AVG.	PER 100,000	FULLY VACCINATED
United States	58,986	18	-58%	47,560	14	-44%	1,908.4	0.58	65%
Northern Mariana Islands ›	145	269	-14%	—	—	—	0.6	1.06	80%
Guam ›	251	149	-52%	—	—	—	1.6	0.93	80%
Idaho ›	1,553	87	-5%	252	14	-45%	8.6	0.48	53%
Maine ›	847	63	-11%	201	15	-40%	10.5	0.78	78%
Montana ›	523	49	-32%	125	12	-56%	8.7	0.82	56%
Alaska ›	344	47	-53%	86	12	-22%	2.9	0.39	61%
West Virginia ›	721	40	-57%	671	37	-32%	17.1	0.96	57%
Kentucky ›	1,680	38	-67%	1,114	25	-46%	32.6	0.73	56%
New Hampshire ›	448	33	-52%	108	8	-39%	4.9	0.36	68%
Vermont ›	169	27	-44%	37	6	-53%	1.5	0.24	80%